

**MARLOWE**

**FIRE & SECURITY**

# Innovations

0333 010 2000

[www.marlowefireandsecurity.com](http://www.marlowefireandsecurity.com)

[connect@marlowefireandsecurity.com](mailto:connect@marlowefireandsecurity.com)

# TABLE OF **CONTENTS**



Unified Security Solutions

**Page 1**

Security & Surveillance Solutions

**Page 4**

GSM Mobile Network Intercoms & Access Control

**Page 7**

Body Worn Cameras

**Page 10**

ConnectMe - The Lone Worker Solution

**Page 13**

Redeployable CCTV

**Page 16**

Specialist Lithium-Ion Battery Fire Extinguishers

**Page 19**

TX5 Fire Extinguisher Boxes

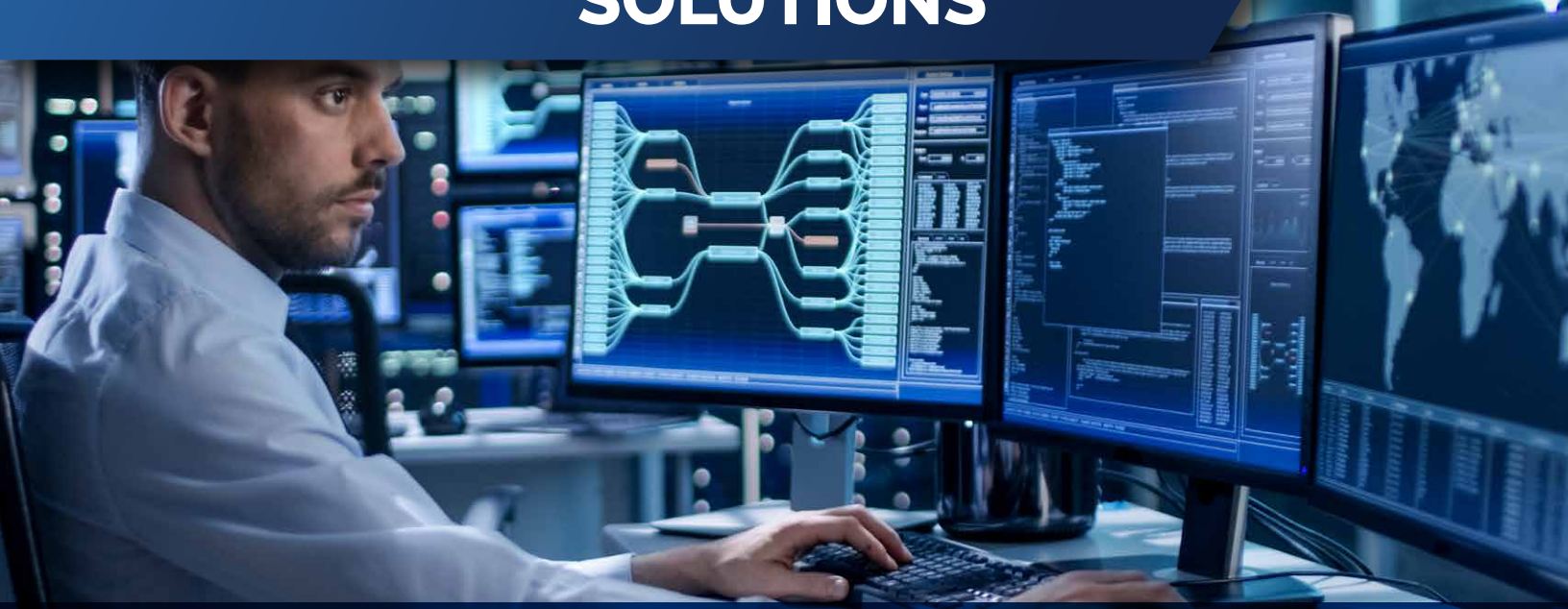
**Page 22**

RX6 Fire Hose Reel Boxes

**Page 25**



# UNIFIED SECURITY SOLUTIONS



The world is constantly changing, and so is the nature of threats your organisation must face. Working in partnership with the industry leaders of unified security solutions, Genetec, our security solutions provide the foundation you need to build a system that keeps up with your needs for years to come.

A unified approach to security gives you the information you need to make the best decisions and respond quickly.

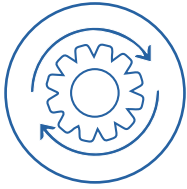
## See the full picture in one place

Each of our systems are part of a single unified security platform, Security Centre. Genetec's Security Centre delivers a comprehensive view of events in one location, allowing you to unify all of your data so that you can manage security policies, monitor events, and run investigations. Its extensive ecosystem lets you expand your system with the technology you need to face emerging threats, and since it's not focused on one narrow set of tasks, it accommodates new data types seamlessly in one interface.

Monitor your video surveillance, access control and automatic number plate recognition systems in one place. With a single interface to master, your team spends less time in training, and since it was designed to unify your entire security environment, it provides a familiar experience even as your system grows, unlocking new gains in efficiency.

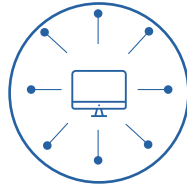


## Features



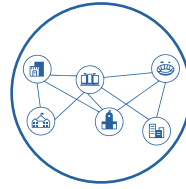
### Modernise your core systems

Manage video, access control, number plate recognition with intrusion management, communications, and more.



### See what's happening clearly

Stop going back and forth between applications. Monitor all security events and manage responses from a single location.



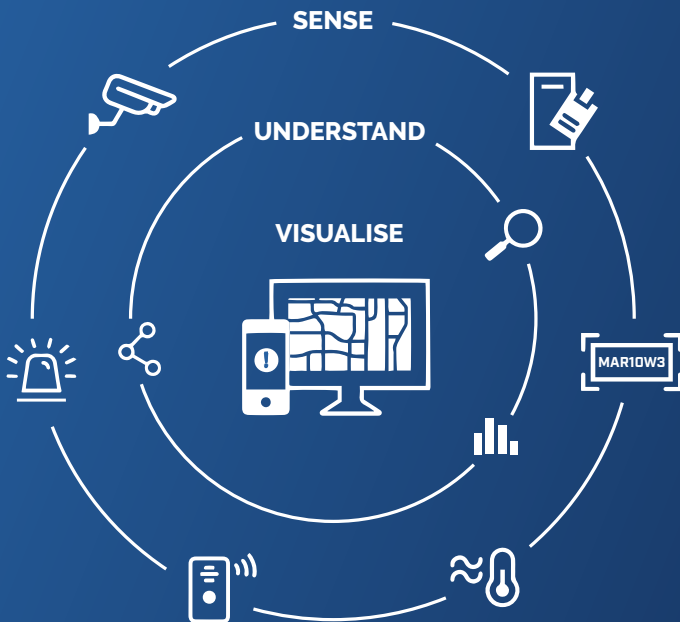
### Scale inside and outside your organisation

From a single building to a worldwide network, Security Centre makes it easy to manage growth and collaborate with stakeholders.



### Transition to the cloud at your own pace

The choice is yours. Augment your system with connected services, migrate parts of it, or deploy it all in the cloud.



## A single platform that evolves with you

Security Centre incorporates access control, video surveillance, ANPR (Automatic Number Plate Recognition), communications, and intrusion detection.

Through an open architecture approach, you further strengthen your security by tapping into a suite of core modules, add-ons, and integrations with third-party security devices and systems.

## Cloud based video

Connect your cameras to the cloud, eliminating the need for on-site servers and allowing you to monitor your sites from anywhere.

- ✓ **Encrypt data between your devices to the cloud**  
Encryption is critical to upholding the protection of your data and security systems. With cloud solutions, all information that is sent between your devices to the cloud is fully encrypted. So, even if a cyber criminal gains access to your data, they won't be able to read or see it without an encryption key.
- ✓ **No need for servers = reduced risk**  
With a true cloud solution, you only need your cameras. There are no servers to maintain and install. That means there are fewer points of entry for potential attackers to target. With less vulnerability, your network and business are more resilient.

# Benefits



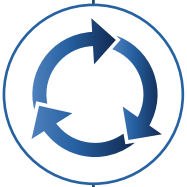
## Increased efficiency and awareness

Through unification of core security systems, you achieve greater operational efficiency and heightened awareness of your security environment.



## Reliable and cybersecure

Have your system available whenever you need it. While built-in failover and redundancy work to safeguard system access and limit interruptions, advanced security mechanisms (encryption, authentication, authorisation) protect privacy by preventing unauthorised access to sensitive data.



## A consistent experience

From system configuration and management, to live monitoring, reporting, and mobile access, operators enjoy the same, intuitive user experience across your entire security system.



## Flexible and scalable

Enhance Security Centre with Genetec modules and 3rd party add-ons. It seamlessly scales to hundreds of sites, and thousands of cameras, doors, intercom devices, and intrusion panels.



## Efficient deployment and maintenance

Organisations experience real savings in deployment, maintenance, training, and day-to-day management of security. Also, avoid the compatibility issues typically faced with the integration of multiple independent products.

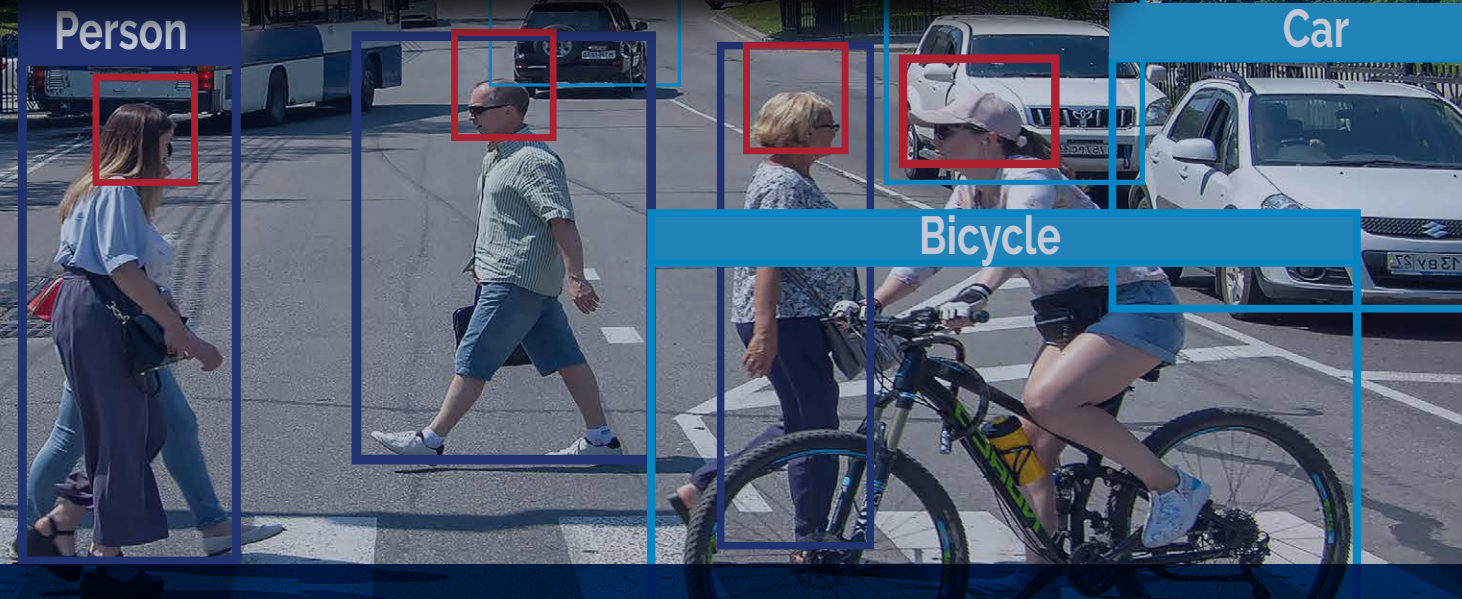


## A clear path to the cloud

Reduce IT infrastructure costs with our cloud services. With Security Centre SaaS edition, cloud archives, automated updates and health monitoring, your organisation becomes more agile and less dependent on hardware.



# SECURITY & SURVEILLANCE SOLUTIONS LIKE NO OTHER



We offer a comprehensive line of security and video surveillance solutions which include IP cameras that support up to 8K resolution, a video management system, video and audio analytics, multi-sensor technology and device integration with a host of 3rd party application providers.

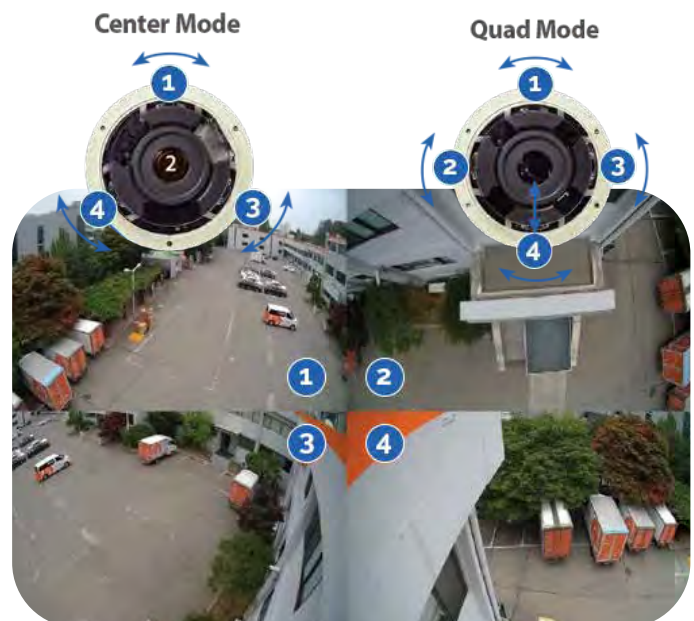
Our intelligent surveillance solutions are used nationwide, securing people, property and data across a range of industries including retail, transportation, education, banking, healthcare, hospitality, airports and more.

## Never miss a thing

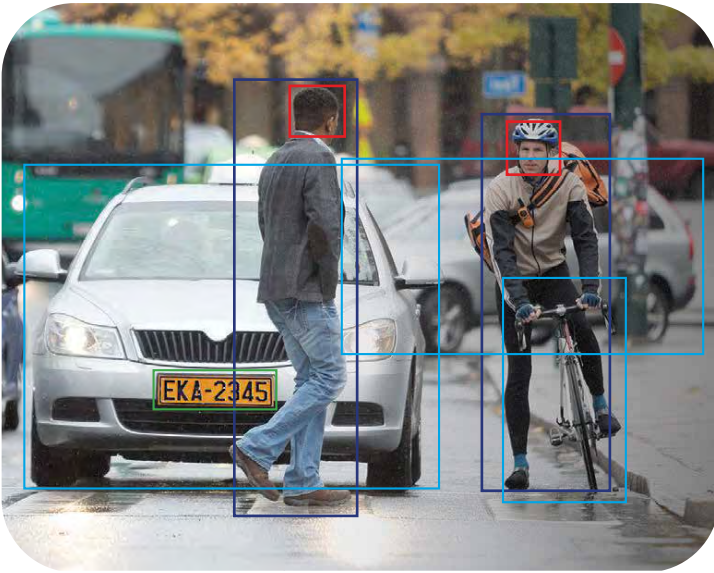
Our multi-sensor/ multi-directional and multi-sensor/ panoramic cameras allow you to monitor wide-open areas without blind spots or hallways and intersections with a single device.

Cameras with replaceable lens modules allow you to customise the camera to meet your specific needs while PTRZ (Pan/Tilt/Rotate/Zoom) equipped devices can be adjusted remotely without physically accessing the unit.

All multi-sensor devices use a single network cable and IP address for quick installation and configuration and can be recorded using a single camera recording license for Wisenet WAVE VMS and most popular video management systems.



## Smart target detection



Our high-resolution 4K cameras have been equipped with AI-based analytics with attribute extraction that can accurately identify both humans and vehicles. Being able to differentiate and identify objects as humans or vehicles leads to faster and more efficient forensic searches as well as a reduction in bandwidth and storage through metadata tagging.



Person



Face



Vehicle



Registration plate

Detect and classify objects, and instantly filter based on specific attributes:

### Person



- Gender
- Upper/lower garment (up to 2 colours simultaneously)
- Bag

### Face



- Gender
- Age
- Glasses
- Face mask

### Vehicle



- Type
- Colour

### Registration plate



- Presence of a registration plate

## Edge artificial intelligence

As AI becomes more broadly adopted across all industries, edge-based AI (which filters and processes data locally on a camera) is being increasingly incorporated into video surveillance to enable end-to-end AI technology.

Today, most security cameras send the data they collect to servers to be analysed. However, with edge-based AI, the data is analysed by the camera first and subsequently sent to the server.

This reduces the burden of transferring and storing large amounts of data to a server, thereby increasing efficiency, saving time, and reducing server costs typically required to analyse data.

✓ Increase event monitoring accuracy by reducing false alarms

✓ Classify target objects with attributes

✓ BestShot for minimising storage and bandwidth requirements

# Intelligent video analytics

With customisable analytics zones and event-based alarms, our video analytics suite reduces the frequency of false alarms whilst increasing the efficiency of forensic review.



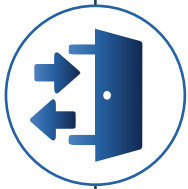
## Face detection

Identifies key facial features and issues alerts when a face is present



## Virtual line crossing detection

Triggers an alarm when objects are detected crossing a pre-defined virtual line or perimeter



## Enter/exit detection

Detection of objects entering or exiting a designated area



## Intrusion detection

Triggers an event when movement is detected in a designated virtual zone



## Loitering detection

Triggers an event when an object enters and rests in a designated virtual zone



## Appear/disappear detection

Detects the appearance or disappearance of an item in a designated virtual zone

## Intelligent video surveillance for every industry, every application



Retail



Transportation



Travel



Healthcare



Banking



Education



HM Prison  
Service



Energy



# GSM MOBILE NETWORK INTERCOMS & ACCESS CONTROL

Designed for residential buildings with multiple occupants such as apartment blocks, our innovative wireless intercoms provide the perfect solution to long-range wireless intercoms.

Simple and cost-effective to install and use, our intercoms allow you to manage multiple properties remotely, and in real-time.

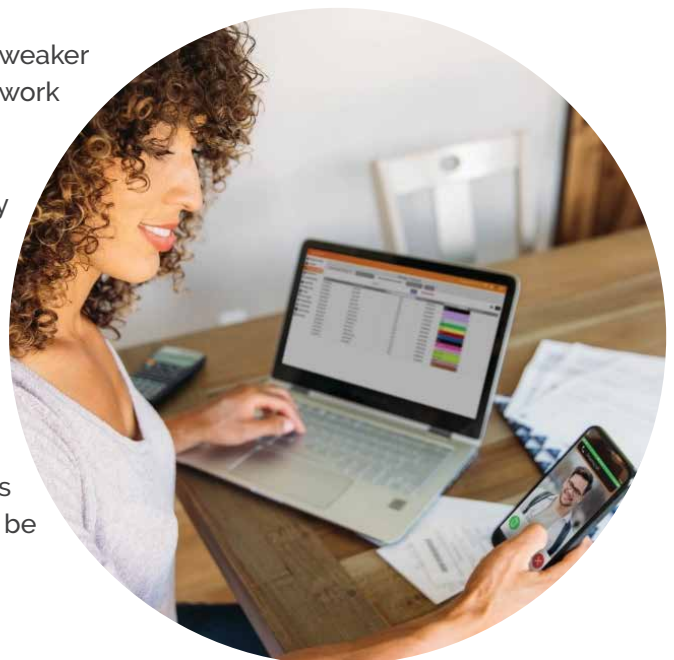
Using GSM-based wireless technology, our intercoms enable residents to control property access from their own mobile phone.

Unlike a typical wireless intercom which use much weaker radio-frequency signals, these GSM intercoms use the mobile network via a SIM card.

They are not limited by the available radio frequencies utilised by older types of wireless intercom; a feature which gives them unlimited wireless range.

## Simple, cost effective installation

Quick and simple to install, our wireless door entry systems eliminate the need for installers to enter the building and can be installed in just a few hours.



# Real-time & remote management

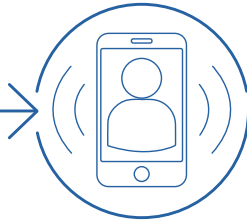
Our intercom systems have no wires, handsets or mechanical keys. Using GSM-based wireless technology, our intercoms enable residents to control property access from their own mobile phone.

**How it works:**



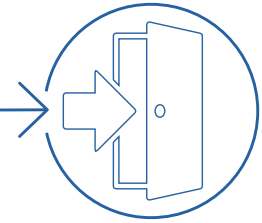
**Intercom button is pressed**

This will call the pre-defined telephone number of the resident (this can be their landline number or mobile number).



**The resident sees them, and answers**

The resident can see the visitor and answer their mobile phone, landline or tablet whether they're at home or not.



**The resident opens the door**

The resident can grant access to the building by unlocking the door using their mobile phone, landline or tablet.

# Secure online management platform

Conveniently manage multiple properties remotely on a single platform with real-time updates. Our easy to use online management platform gives full visibility over who has access to your property and when. Through the platform you can manage all of your properties, products, access points and users.

By simply creating an account and registering your products to your account, you can configure unique access permissions for all residents and users, including assigning key fobs, transmitters and codes.

With unlimited free updates, you can easily make remote, real-time updates to:



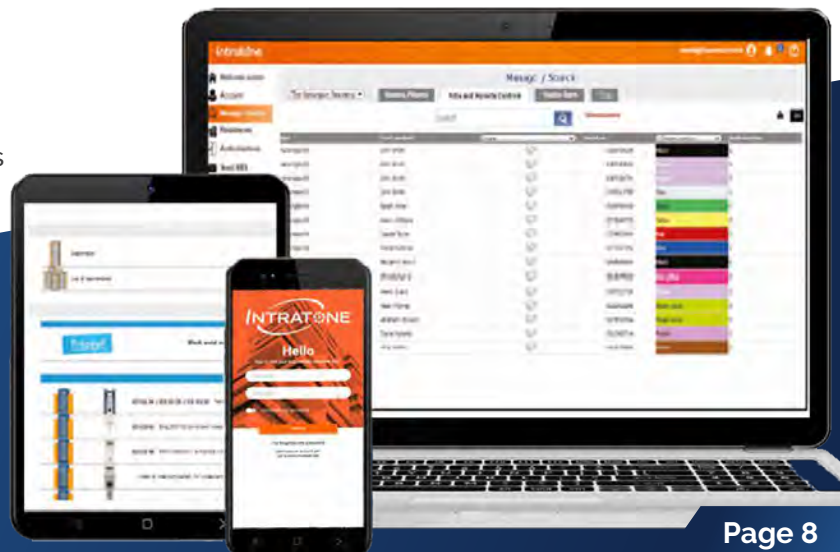
Resident details



Activating/deactivating new key fobs



Granting remote access for contractors



# Features



## Video communication

Video calls are available with the app



## 4G

Equipment can be connected to mobile phone networks



## Audio

Audio communication with landline and mobile phones



## Data

Equipment can be connected to wireless networks



## Wireless intercom

No need for extensive cabling



## Real-time management

Have full visibility and manage/update multiple properties remotely in real-time



## Hearing loop

Most of our intercoms include a hearing loop that connects to hearing aids



## Hands-free key fobs

Allows contactless door opening



## Cloud based portal

Easily access and manage your data anytime, anywhere



## Email alerts

Alerts can be sent directly to registered contacts



# BODY WORN CAMERAS

IP68



Many frontline workers who engage with the public frequently face confrontational behaviour or disputes from the public.

Body worn cameras are proven to reduce conflict, improve personal safety and help secure criminal prosecutions by providing encrypted and tamper-proof video and audio evidence.

Providing staff with body worn cameras can help diffuse situations, allow businesses to react faster in an emergency, record key events exactly as they took place and supplement other video, audio and eyewitness records.

## See everything, miss nothing

Combining a body camera with a remote speaker microphone, our body worn cameras can capture, store, and share video and audio in the field. The multi-functional design can reduce your equipment costs and simplify communications whilst helping to create a safer environment for your employees.

## Real-time, high quality video recording

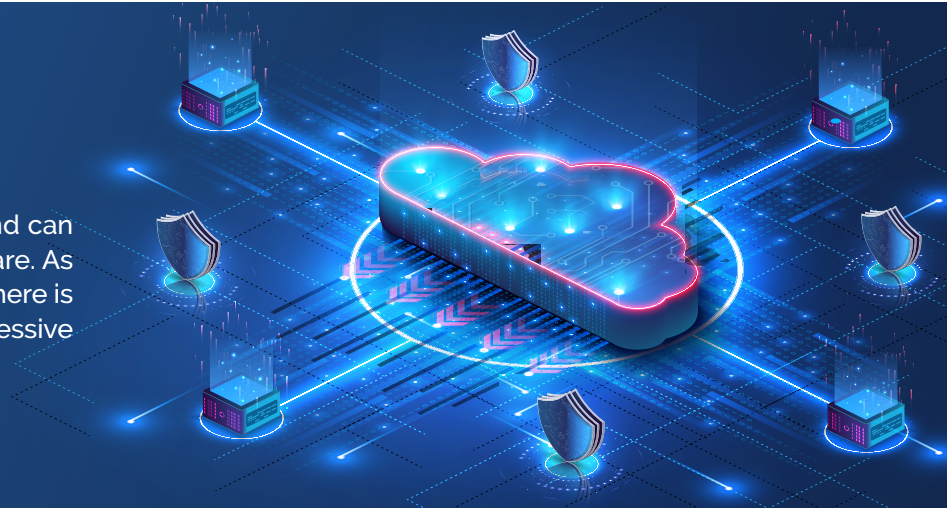
Share real-time, high definition video with centralised teams so they can see exactly what is happening and enhance situational awareness. When the emergency button is pressed, the camera will automatically start recording, and immediately trigger the emergency alarm to the control centre. Pre and post recording video buffer captures events for up to 30 seconds before/after the user turns the video recording on/off.

## Push-to-talk over cellular with group calling

Our body worn cameras support push-to-talk over cellular (PoC) voice communications. By simply pressing the push-to-talk key, the user is able to make both individual and group voice calls. With advanced noise reduction technology, the camera picks up the user's voice whilst filtering out the ambient noise, allowing for loud and clear audio, even in noisy environments.

# Cloud Storage

Data is automatically uploaded to the cloud, and can be remotely accessed by users wherever they are. As a standalone solution connected to the cloud, there is no need for network connectivity, and no excessive data charges.



# Evidence management platform

Evidence management is an integral part of any body worn video solution. Our evidence management platform collects and securely stores high definition digital evidence from the body worn cameras, that can be reviewed, managed and shared quickly and efficiently.

Easily find data by tagging an evidence file to access it later via a keyword search. For extra data security, customised permissions can be managed for different users.

# Benefits



## Workforce safety

Protect the safety of your employees. The sooner an emergency is triggered, the quicker your organisation can react.



## Enhanced collaboration

Staying connected anywhere, any time is crucial for some businesses. With our body worn cameras you are able to leverage messaging, audio and video communication.



## Presence and location awareness

Built in GPS enables real-time tracking location, and can save valuable response time in the event of an incident.



## Simple & effective evidence management

Securely store and manage all your digital evidence. Save time and share your evidence quickly and efficiently via an access link.



## Cloud storage

Import and upload data to the cloud. No risk of loss or theft of personal data, and no excessive data charges.

# Features

VM780	VM580D
<p>Taking bodycams to the next level with the most advanced range of features available including:</p> <ul style="list-style-type: none"> <li>• 2.8" touch display</li> <li>• Powerful battery life - up to 8 hours continuous recording</li> <li>• 3G/4G &amp; Wi-Fi for real-time transmission anywhere</li> <li>• GPS built-in</li> <li>• PoC application compatibility</li> <li>• 1080P high definition display</li> <li>• Built in radio providing PTT to broadband and radios</li> </ul>	<p>Precise and effective recording via a HD camera with an immediate playback function of videos.</p> <ul style="list-style-type: none"> <li>• Compact bodycam size &amp; friendly UI</li> <li>• 1080P with infrared night vision</li> <li>• All-time positioning through bodycam GPS</li> <li>• Built in radio providing PTT to broadband and radios</li> </ul>



# Applications

For many years body cameras have been proven to deter aggression and provide an independent account of incidents for blue light workers such as the police, ambulance workers and firefighters to enforce the law and for safety.

But it's not just law enforcement who face situations where body cameras can make a difference. NHS frontline workers, care workers, teachers and retail staff are also regularly in situations where they face disruption or aggression.

- |                         |                        |
|-------------------------|------------------------|
| • Security              | • Catering             |
| • Law Enforcement       | • Delivery             |
| • NHS & Healthcare      | • Logistics            |
| • Retail                | • Events               |
| • Public Transport      | • Finance              |
| • Leisure & Hospitality | • Construction & Civil |
| • Travel                | • Engineering          |



# CONNECTME - THE LONE WORKER SOLUTION

Lone working environments are continuously evolving, and the need for remote and isolated work is becoming more apparent.

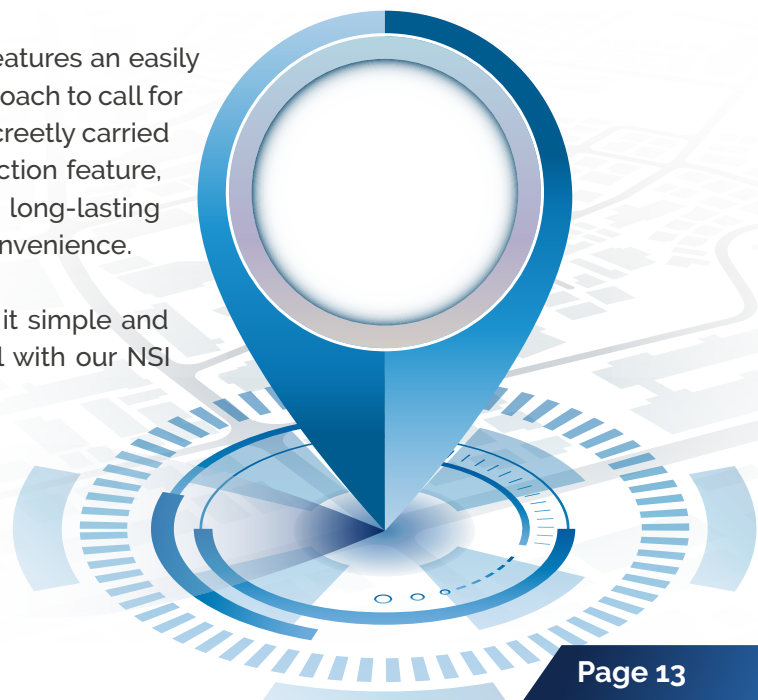
Our ConnectMe Lone Worker Solution connects us to your employees, allowing us to ensure that your people are protected at any time of day or night when they are working in isolation from others and without close or direct supervision.

## Safeguarding as a service

As an employer, it is your duty to provide a safe environment for your employees. With our lone worker solution, you can ensure that your people are protected 24/7 for as little as 18p per unit per day.

A lightweight and discreet device, our lone worker solution features an easily accessible panic button, providing a simple and effective approach to call for assistance when needed. The small design allows it to be discreetly carried or worn with no distractions. In addition, the man down detection feature, two-way voice communication, GPS location tracking and long-lasting battery life all provide an additional level of protection and convenience.

If the users feels at risk, the large SOS alarm button makes it simple and easy to call for assistance, generating a two-way audio call with our NSI Gold, Cat II Alarm Receiving Centre (ARC), Marlowe Connect.





## GPS location tracking

The lone worker solution utilises real-time GPS tracking and tracking history for maximum protection. When the panic button is pressed, the emergency alerts send the device's GPS location to the ARC to allow the operator to instantly locate and talk to the user, closely monitor the situation, and respond accordingly.



## Intelligent fall detection (man down)

The intelligent, configurable sensors can detect a fall or impact of any kind, providing extra protection for those who suffer from medical conditions, those at risk of violence or working in environments where slips, trips and falls are a risk. When triggered, the device will activate an alarm on behalf of the user.

With the safety check in/out feature, the device will automatically trigger an alarm if the user fails to check in/out within the allocated time.

## Management portal

Simple and easy to use, the online ConnectMe management portal provides real-time information to ensure your lone workers are given the best possible protection at all times, 24 hours a day, 7 days a week.

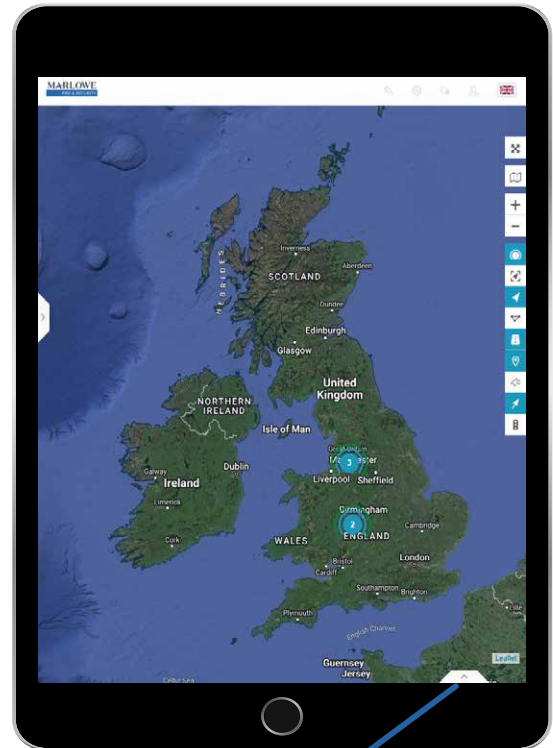
Easy to access via PC, mobile device or tablet, it allows you to view live alerts and respond to any lone worker alarms that need your assistance as per your company's escalation procedure.

The easy-to-view data means you can effectively and efficiently manage your lone worker devices, reducing time spent on lone worker administration.

Secure access controls prevent unauthorised logins and you only see your devices so you can rest assured the sensitive information of your lone workers is safe and secure.

### Features:

- Live/real-time statuses of all devices and lone workers
- Specific escalation paths for each worker
- Usage and alert history
- Alarm history
- License and billing status and control
- Device allocation
- Full history of all usage



Sensors	
Address:	Lowry House, Broadwa...
Time:	17-03-2022 12:52:48
Stop duration:	30h 18min 25s
Driver:	-
# Last Alarm	-
Battery %	96 %
# Charging!	true
Speed	0 mph



# Technical specification

Size and weight	Height 61mm, width 43mm, depth 16mm, weight 35g
Operating time	Battery: chargeable 3.7V 800mAh
Operating temperature	-20c to +80c
GPS	Dual-band 900/1800 or 850/1900MHz

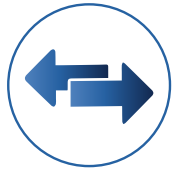
# Features



Lightweight & discreet



Real-time GPS tracking



Two-way voice communication



Man down detection



Safety check in/out



Waterproof



Long lasting battery life



Convenient charging



Panic button



# REDEPLOYABLE CCTV

Redeployable CCTV Systems provide highly-effective temporary surveillance coverage to assist in the reduction of crime, vandalism, fly tipping and anti-social behaviour.

Implementing a redeployable CCTV programme as either an alternative to, or compliment for a fixed fibre-based CCTV system offers a multitude of benefits.

## Rapid deployment and ease of installation

Installing a fibre-based CCTV system can be time-consuming and expensive. The civils work required to run extensive cabling underground is a potentially disruptive process that prevents an organisation from being agile in response to CCTV monitoring requirements.

Our Redeployable CCTV cameras remove the requirement for such infrastructure, meaning they can be installed quickly and at a significantly reduced cost.

The ability to tailor your surveillance system to target specific areas of interest means fewer cameras and supporting devices are needed to monitor the same area – and therefore a significantly lower level of overall investment is required.



## Flexibility and redeployments



One of the key benefits of Redeployable CCTV is the ability to **easily move the cameras** to a new location should the monitoring requirements change.

This is particularly beneficial should the camera's original purpose become obsolete either due to criminal activity in the area being displaced or the camera becoming obscured (by a new build, foliage, road layout change etc).

## No power, no network, no problem

Having no power or network connection is no longer a problem. With the option to power the camera by a solar panel and connectivity through 4G, these cameras are ideal for areas that are not suitable for laying wired network and electric supply lines.

The camera sends data to a communication station and then on to the security monitoring centre, where it can be managed. This means both monitoring and management activities, like viewing footage live, can be done remotely over the 4G network.



## Quality

High quality images, advanced **AI detection** analytics, including deep learning algorithms that primarily target people and vehicles, provide higher flexibility and accuracy for end-users.

The cameras provide various advanced applications such as Face Recognition, ANPR, Metadata, People Counting, and Traffic Data.

Low bandwidth streaming allows users to benefit from high-quality live video over wireless networks with zero latency and full PTZ responsiveness.

Built in microphone and 2 way audio can play pre recorded messages when activations are detected within the camera for intervention offering a strong deterrent to crime.

## Benefits

Implementing a redeployable CCTV programme as either an alternative to, or complement for a fixed fibre-based CCTV system offers a multitude of benefits:

- Proactive site protection and monitoring 24/7
- High visibility to act as a deterrent
- Quick & easy to install, fully portable
- No requirement for ground or civil works
- Minimal training to deploy, redeploy and operate
- Rapid deployment makes it the ideal for temporary, mobile or semi-permanent applications
- Cameras can easily be removed and relocated at any time

## Remote connectivity & monitoring

All systems can be monitored via a range of mobile applications. We also have a range of applications for Windows 10. All systems have the option to send email alerts and notifications including snapshots of the alert.

We recommend all systems are monitored to provide uninterrupted surveillance by our 24/7 Category II NSI Gold Standard BS5979 accredited Alarm Receiving Centre, Marlowe Connect. 24/7 on call remote and engineer attendance is also available.

Advanced AI detection analytics instantly and reliably alerts our monitoring station to suspicious activity occurring on your site. Industry leading image clarity allows our operators to clearly identify the nature of activity and escalate to a police response when necessary.

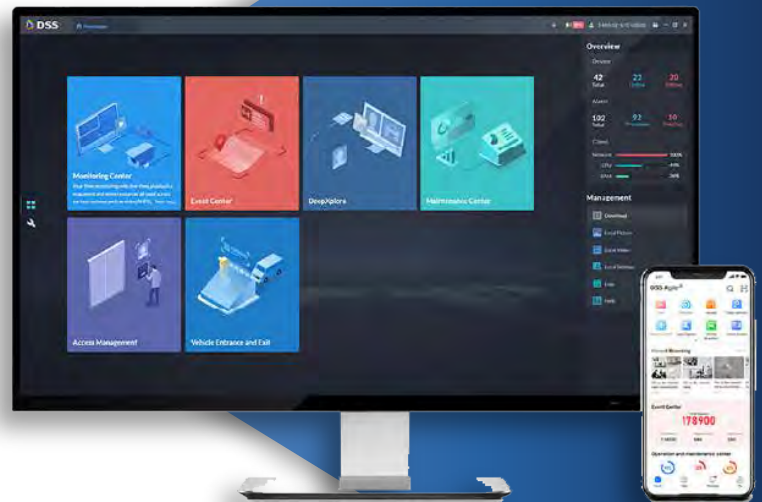
## Applications

Ideal for use across a variety of temporary deployment CCTV applications, these cameras can be used to provide temporary monitoring and security for secure remote sites and assets.

As a short-term solution for live events, cameras can be transferred from their standard locations to provide extra monitoring for the duration of any temporary event without an organisation having to invest in additional CCTV.

## Features

- No power required, no network required
- 4G connectivity
- Remote access to live and recorded footage
- Free, unlicensed software (desktop and mobile app)
- Lightweight and compact unit
- Additional inputs and video channels – add ANPR cameras and multiple accessories
- Control room integration



# SPECIALIST LITHIUM-ION BATTERY FIRE EXTINGUISHERS



Lithium-ion batteries present a more frequent fire hazard each day as the number of consumer and industrial goods powered by these batteries increases. They are used in power tools, computers, personal devices, scooters and bikes, cars, forklift trucks and other factory equipment and much more.

The dangers they pose are prominent as a lithium-ion battery fire may result from physical damage that causes a short circuit, overheating, internal cell failure, short circuits, or manufacturing defects.

Conventional fire extinguishers cannot effectively extinguish a lithium-ion battery fire. Only a specialist extinguisher such as the Firechief Lith-Ex extinguisher is suitable on this type of fire.

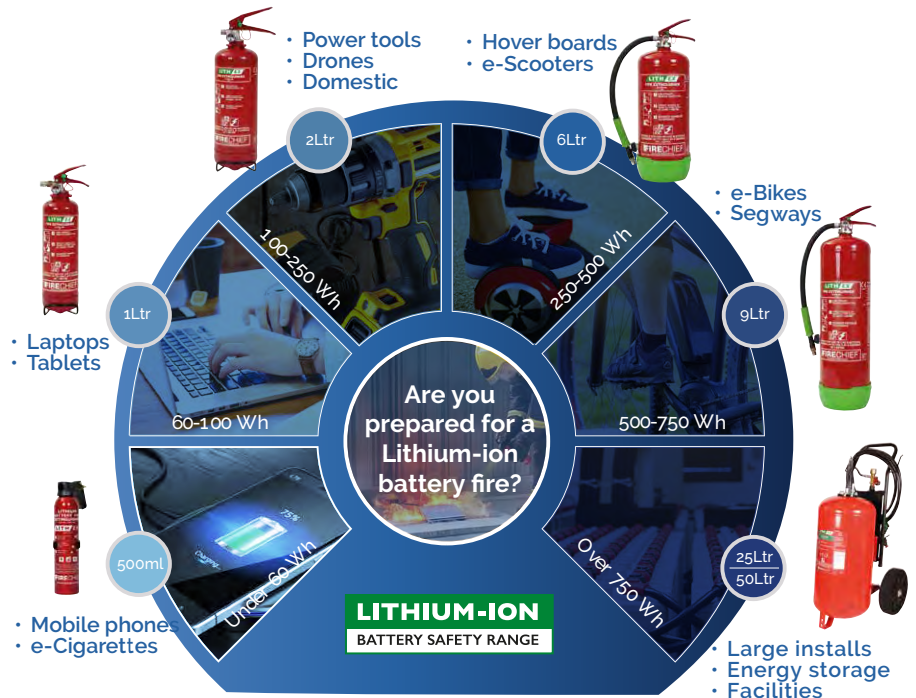
## How do Firechief Lith-Ex extinguishers work?

Firechief Lith-Ex extinguishers contain Aqueous Vermiculite Dispersion (AVD), a revolutionary fire extinguishing agent. The water content of the extinguisher cools the fire source, while the Vermiculite platelets encapsulate the fuel source creating a thermal barrier to prevent propagation of the fire. The Vermiculite film is not electrically conductive. AVD is nearly twice as effective as water on a Class A fire and is environmentally friendly.



# Features

- ✓ Hot work compliant
- ✓ Easy to store
- ✓ Non-toxic
- ✓ Environmentally friendly
- ✓ 5 year guarantee
- ✓ Available in 5 sizes up to 9 litre; 0.5, 1, 2, 6, 9 litre (0.5 is the most popular as a home fire extinguisher)
- ✓ Kitemark approved (Models FLE2, FLE6, FLE9)
- ✓ Can extinguish lithium-ion battery fires, uncontrollable by other extinguisher types
- ✓ Quickly cools and prevents excessive heat, forming a thermal barrier to stop fire propagation



# Applications

Firechief Lith-Ex extinguishers are suited to confined spaces where fires need to be suppressed in their infancy before developing into a fully established fire.

They can also be used to protect against fires where batteries are under charge and where batteries are stored, for example, goods distribution, battery collection bins, battery recycling locations, public services, and battery charging stations.



Waste & Recycling



Energy Storage



Transport – Aviation, Automotive



Logistics



Marine



Domestic



Industrial



Motorsport



Shipping

# Specifications

Model	FLE1	FLE2	FLE6	FLE9
Product Code	100-1576	100-1577	100-1578	100-1579
Description	Firechief 1L Lith-Ex Extinguisher	Firechief 2L Lith-Ex Extinguisher	Firechief 6L Lith-Ex Extinguisher	Firechief 9L Lith-Ex Extinguisher
Battery Capability Suitability (Wh)*	60-100	100-250	250-500	500-750
Capacity (ltr)	1	2	6	9
Fire Rating	3A	5A	13A	13A
MED Approval	N/A	YES	YES	YES
Throw Range (m)	1.5 - 2.0	1.5 - 2.0	1.5 - 2.0	1.5 - 2.0
Discharge Time (secs)	25	50	120	180
Working Pressure (bar)	15	15	15	15
Temperature Range (°C)	+5/+60	+5/+60	+5/+60	+5/+60
Product Height (mm)	350	410	530	672
Product Diameter (mm)	85	110	170	170
Filled Weight (kg)**	2.1	3.9	10.7	15.0
Carton Height (mm)	360	420	525	670
Carton Length (mm)	102	125	197	199
Carton Width (mm)	104	128	267	226
Packaged Weight (kg)***	2.5	4.0	12.0	16.0
Product EAN	5055377960544	5055377960551	5055377960568	5055377960575

\* Guide only.

\*\* Extinguisher, contents and plastic base only (where applicable) - not including hose, bracket or packaging.

\*\*\* Includes all packaging, hose / horn and bracket.



# TX5 FIRE EXTINGUISHER BOXES



The TX5 Extinguisher Box has been developed exclusively for the holiday and leisure park industry. Weatherproof and waterproof, the TX5 is designed and built to provide long lasting protection for fire extinguishers making them ideally suited for all outdoor applications.

The TX5 box has been improved for the 2022 season and now offers storage for up to 4 fire extinguishers up to 9Kg / 9Ltr.

## Why do you need to protect your fire safety equipment?

Fire extinguishers located in areas with public access, or kept outdoors, can be vulnerable to vandalism, accidental damage, misuse or corrosion.

BS 5306 standards outline a responsibility to protect vital fire safety equipment – especially those stored in an outdoor environment.

### Protect extinguishers from corrosion

Extinguishers stored outdoors or in corrosive atmospheres can become unsafe for use or inoperable.

### Prevent vandalism/accidental damage

When extinguishers are exposed to public access there's a risk of vandalism – and even minor tampering can result in the equipment failing to operate properly when it's required.

### Accessible, easy to identify

In a crowded holiday park, spotting a lone fire extinguisher in an emergency could prove difficult. Fire extinguisher boxes are large and bright, making them easy to identify even from a distance.

### Lockable to prevent theft

Extinguisher boxes can also be locked to prevent theft. This may be necessary in quieter areas or at night, where the risk of extinguishers being stolen increases.



## Brand new and innovative design

With their innovative design, reinforced non-deformable structure and alarm security, the TX5 Fire Extinguisher Box is designed and built to provide long lasting protection for fire extinguishers making them ideally suited for all outdoor applications.

Made of polypropylene by injection moulding, their solidity and durability is guaranteed to withstand even the harshest weather conditions.

Our boxes are compliant with British Standards which stipulate that all reasonable measures must be taken to protect fire safety equipment from damage, vandalism and accidental discharge.



## Applications



Holiday Parks



Garage Forecourts



Aviation Spaces



Construction Sites



Industrial Sites



Festivals

## Specification

### Dimensions

Height: 650mm Width: 600mm Length: 600mm

### Capacity

Holds 4 x 9 litre water, foam or 9kg powder extinguishers

# Features

- ✓ Integral gV alarm
- ✓ Hinge on the back & clasp on front
- ✓ Fully weatherproof
- ✓ Corrosion resistant
- ✓ Manufactured from new advanced UV stabilised materials
- ✓ Complete with fire action sign
- ✓ Ergonomic side handles for easy carrying, as well as space for a padlock
- ✓ Highly resistant to water, UV rays and high and low temperatures
- ✓ Internal TPE seal protects against dust and water ingress
- ✓ High resistance to flammability and fuel and lubricating oil
- ✓ Smooth, soft lid to support with sign application
- ✓ Ground fixing kit available
- ✓ Subject to an approximate 2-3 week turnaround from order to dispatch



# RX6 FIRE HOSE REEL BOXES



With their innovative design, reinforced non-deformable structure and alarm security, the RX6 Fire Hose Reel Box is designed and built to provide long lasting protection for fire hose reels making them ideally suited for harsh environments and outdoor applications.

## Why do you need to protect your fire safety equipment?

Fire hose reels located in areas with public access, or kept outdoors, can be vulnerable to corrosion, accidental damage, misuse or vandalism.

Weatherproof and waterproof, the RX6 Hose Reel Box is chemical resistant, fully recyclable and UV-stabilised PE.

Made of polypropylene by injection moulding, their solidity and durability is guaranteed to withstand even the harshest conditions.

## Fire Hose Reel Regulations

Fire Hose Reel Regulations require routine and regular checks to be carried out by the responsible person or their representative at suitable intervals, dependent upon the premises risk assessment, to ensure:

- Hose reels are located in their designated place
- They are unobstructed and signage and instructions are legible
- There are no defects, corrosion or leaks

## Benefits



### Protect hose reels from corrosion

Fire hose reels stored outdoors or in corrosive atmospheres can become unsafe for use or inoperable.



### Prevent accidental damage

When fire hose reels are exposed to public access there is a risk of accidental damage – and even minor tampering can result in the equipment failing to operate properly when it is required.



### Integral alarm and lockable

The RX6 Hose Reel Box features a built in gV alarm, and can also be locked to prevent theft, misuse or vandalism.



## Applications



Holiday  
Parks



Garage  
Forecourts



Aviation  
Spaces



Construction  
Sites



Industrial  
Sites



Festivals

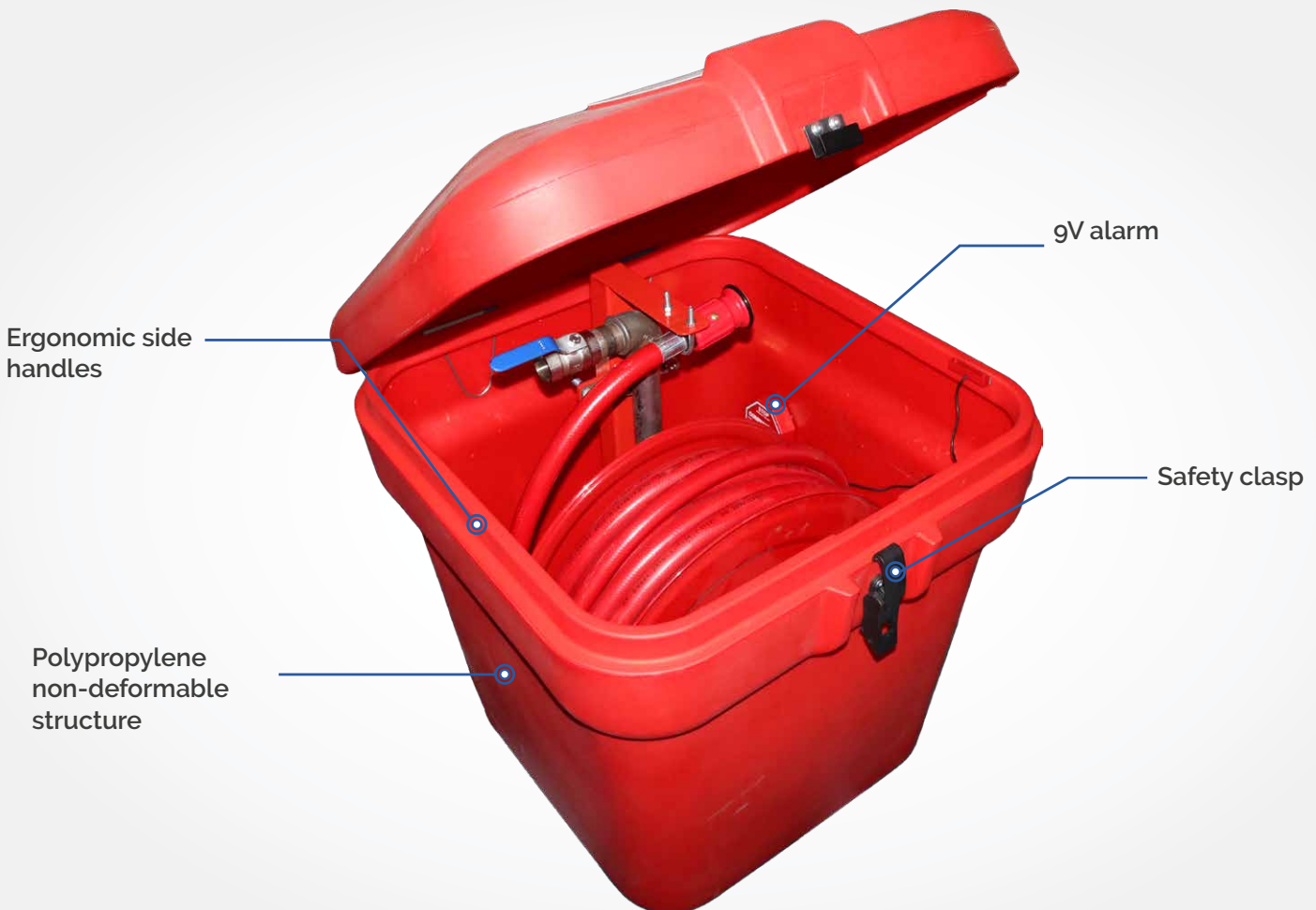
## Specification

### Dimensions

Height: 650mm Width: 600mm Length: 600mm

# Features

- ✓ Integral 9V alarm
- ✓ Hinge on the back & clasp on front
- ✓ Fully weatherproof
- ✓ Corrosion resistant
- ✓ Manufactured from new advanced UV stabilised materials
- ✓ Complete with fire action sign
- ✓ Ergonomic side handles for easy carrying, as well as space for a padlock
- ✓ Highly resistant to water, UV rays and high and low temperatures
- ✓ Internal TPE seal protects against dust and water ingress
- ✓ High resistance to flammability and fuel and lubricating oil
- ✓ Smooth, soft lid to support with sign application
- ✓ Subject to an approximate 2-3 week turnaround from order to dispatch



# MARLOWE

FIRE & SECURITY

0333 010 2000

[www.marlowefireandsecurity.com](http://www.marlowefireandsecurity.com)

[connect@marlowefireandsecurity.com](mailto:connect@marlowefireandsecurity.com)

