

MARLOWE

FIRE & SECURITY



ConnectMe - The Lone Worker Solution

Lone working environments are continuously evolving, and the need for remote and isolated work is becoming more apparent.

Our ConnectMe Lone Worker Solution connects us to your employees, allowing us to ensure that your people are protected at any time of day or night when they are working in isolation from others and without close or direct supervision.

Safeguarding as a service

As an employer, it is your duty to provide a safe environment for your employees. With our lone worker solution, you can ensure that your people are protected 24/7 for as little as 18p per unit per day.

A lightweight and discreet device, our lone worker solution features an easily accessible panic button, providing a simple and effective approach to call for assistance when needed. The small design allows it to be discreetly carried or worn with no distractions. In addition, the man down detection feature, two-way voice communication, GPS location tracking and long-lasting battery life all provide an additional level of protection and convenience.

If the user feels at risk, the large SOS alarm button makes it simple and easy to call for assistance, generating a two-way audio call with our NSI Gold, Cat II Alarm Receiving Centre (ARC), Marlowe Connect.



GPS location tracking

The lone worker solution utilises real-time GPS tracking and tracking history for maximum protection. When the panic button is pressed, the emergency alerts send the device's GPS location to the ARC to allow the operator to instantly locate and talk to the user, closely monitor the situation, and respond accordingly.



Intelligent fall detection (man down)

The intelligent, configurable sensors can detect a fall or impact of any kind, providing extra protection for those who suffer from medical conditions, those at risk of violence or working in environments where slips, trips and falls are a risk. When triggered, the device will activate an alarm on behalf of the user.

With the safety check in/out feature, the device will automatically trigger an alarm if the user fails to check in/out within the allocated time.

To find out how we can support you please contact us on:

t. 0333 010 2000

w. marlowefireandsecurity.com

e. hello@marlowefireandsecurity.com

MARLOWE

FIRE & SECURITY

Management portal

Simple and easy to use, the online ConnectMe management portal provides real-time information to ensure your lone workers are given the best possible protection at all times, 24 hours a day, 7 days a week.

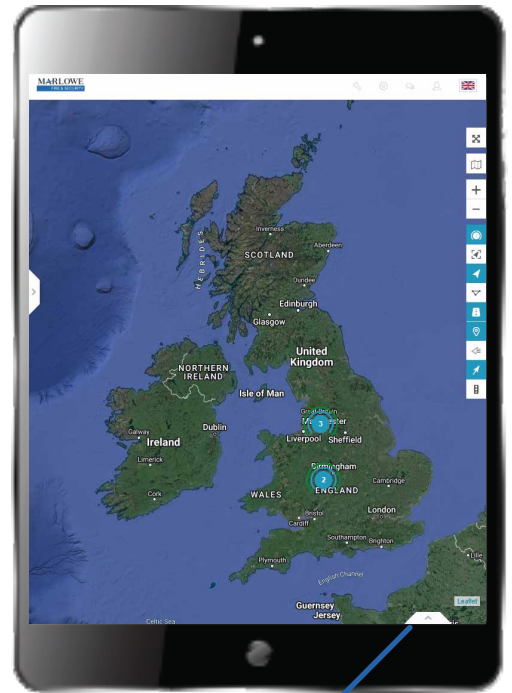
Easy to access via PC, mobile device or tablet, it allows you to view live alerts and respond to any lone worker alarms that need your assistance as per your company's escalation procedure.

The easy-to-view data means you can effectively and efficiently manage your lone worker devices, reducing time spent on lone worker administration.

Secure access controls prevent unauthorised logins and you only see your devices so you can rest assured the sensitive information of your lone workers is safe and secure.

Features:

- Live/real-time statuses of all devices and lone workers
- Specific escalation paths for each worker
- Usage and alert history
- Alarm history
- License and billing status and control
- Device allocation
- Full history of all usage



Offline		Sensors	
Address:	Lowry House, Broadwa...	# Last Alarm	-
Time:	17-03-2022 12:52:48	█ Battery %	96 %
Stop duration:	30h 18min 25s	# Charging!	true
Driver:	-	🌀 Speed	0 mph

Technical specification

Size and weight	Height 61mm, width 43mm, depth 16mm, weight 35g
Operating time	Battery: chargeable 3.7V 800mAh
Operating temperature	-20c to +80c
GPS	Dual-band 900/1800 or 850/1900MHz



Features



Lightweight & discreet



Real-time GPS tracking



Two-way voice communication



Man down detection



Safety check in/out



Waterproof



Long lasting battery life



Convenient charging



Panic button

To find out how we can support you please contact us on:

t. 0333 010 2000

w. marlowefireandsecurity.com

e. hello@marlowefireandsecurity.com

MARLOWE
FIRE & SECURITY