

MAC

Marlowe Asset Capture by

MARLOWE
FIRE & SECURITY GROUP



Contents

1.0 Introduction to Marlowe Asset
Capture (MAC)

2.0 Entry Level

3.0 Advanced Level

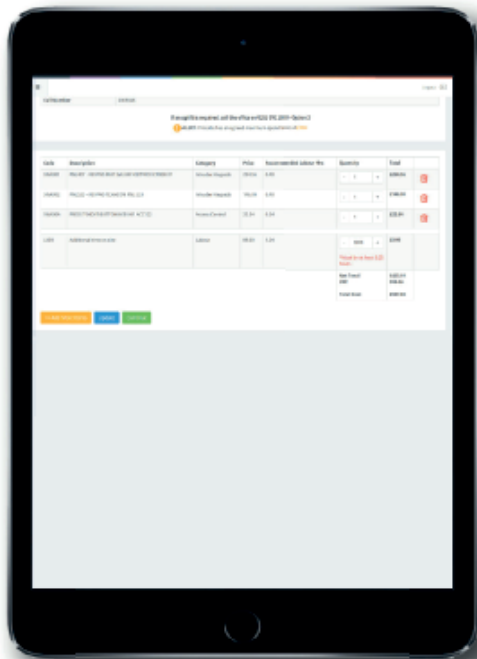
Page 1

Page 2

Page 3

Marlowe Asset Capture

MAC



The Marlowe Asset Capture (MAC) tool is a bespoke Asset Management Solution designed by Marlowe Fire & Security Group to provide our clients with a peace-of-mind understanding of their installed fire life safety systems across their premises, aiding in ensuring their estate remains functional and compliant, whilst supporting in life cycle upgrades and budget planning for the future.

Our bespoke application can be utilised to offer two distinctive levels of asset management:

- Entry Level
- Advanced Level

Entry Level

At Entry Level, a summary of individual assets is recorded by the Engineer as the customer's fire or security systems are serviced. For example:

Quantity		Asset Type
126	x	Optical Smoke Detectors
10	x	Heat Detectors
27	x	Manual Call Points
1	x	4 loop Control Panel
1	x	Repeater Panel

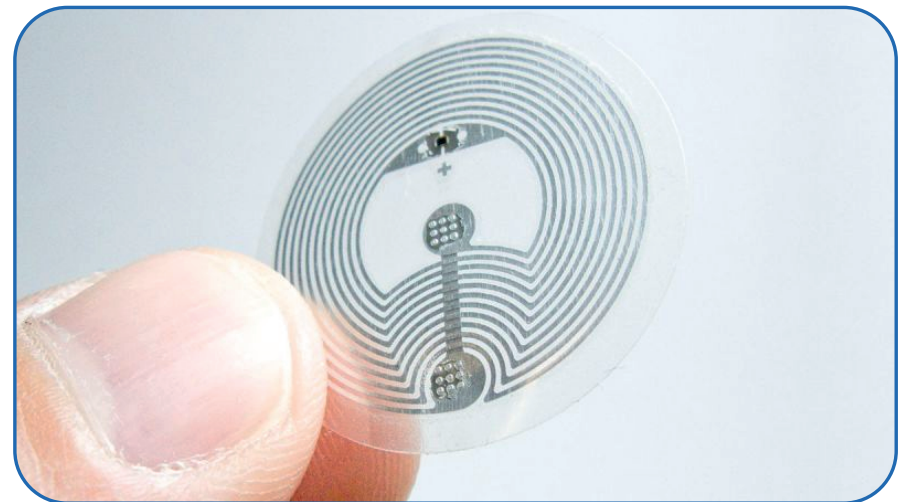
The data compiled is collected electronically via the Engineer's tablet and fed back to our ERP system. The data is then shared either via reports or on demand via our My-Marlowe Customer Portal.

Advanced Level

The advanced level of the Asset Management Solution is much more sophisticated and provides individual asset information down to device level. For example, every smoke detector, PIR or access control reader. As the Engineer completes an initial inspection, each device is recorded in detail including location, condition and protocol.

As each individual asset is tested, it is then 'tagged' by applying an NFC tag (Near Field Communication).

The NFC tag is a small, paper thin sticker with an aerial located on the back. This is the same technology used in mobile phones for services such as Apple Pay. To read the device it simply needs to be tapped with a suitable reader.



The NFC tag is scanned by our Engineer with a Bluetooth NFC tag reader, and the associated unique serial number is added to the asset database.



Each time a device is tested thereafter, the tag is read and the date of the test is confirmed along with whether or not the device has passed or failed the inspection. Failed devices are retired and a note of the replacement device is linked.

If the device cannot be changed at the point of failure for any reason, an impairment will be raised on our database at site system level enabling regular and clear reporting of any impairments to a specific system on a customer's site.

The data would resemble the following:

Device No	Location	Type	Test Date	Pass/Fail	Replaced Date
001	First Floor Production Office	Optical Smoke	03/04/2020	Pass	
002	First Floor Corridor Fire Exit	Manual Call Point	03/04/2020	Pass	
003	First Floor Kitchen	Heat Detector	03/04/2020	Fail	04/04/2021
004	First Floor Stair Lobby	Optical Smoke	04/04/2020	Pass	

This gives both company and customer great oversight of their estate in terms of asset lifecycle, condition reporting and transparency of compliance providing proof of individual device testing.

5.0

Advanced Level

Reports are available on demand through our S|A|M|S Account Management Platform issued by our Account Managers or on demand via the My-Marlowe Customer Portal.



Once the call is complete a report showing devices tested will be sent along with the Engineer's service certificate to the email address of the client's choice.

The logo features the word "MARLOWE" in a large, white, serif font. A white diagonal line cuts through the letter "A".

MARLOWE

The tagline "FIRE & SECURITY GROUP" is written in a bold, blue, sans-serif font and is contained within a white rectangular box.

FIRE & SECURITY GROUP

The text "Fire Protection" is displayed in a white, sans-serif font.

Fire Protection

The text "Security Systems" is displayed in a white, sans-serif font.

Security Systems

The text "National Coverage" is displayed in a white, sans-serif font.

National Coverage

The text "Connected Services" is displayed in a white, sans-serif font.

Connected Services